

Discharge Measurement Summary

Site name Sodhouse4
Site number 06
Operator(s) RBrannan
File name Sodhouse4_20230615-123937.ft
Comment

Start time	6/15/2023 11:30 AM	Sensor type	Top Setting
End time	6/15/2023 12:32 PM	Handheld serial number	FT2H2219029
Start location latitude	43.250	Probe serial number	FT2P2219014
Start location longitude	-118.859	Probe firmware	1.30
Calculations engine	FlowTracker2	Handheld software	1.7

# Stations	Avg interval (s)	Total discharge (m³/s)
27	40	0.1328

Total width (m)	Total area (m²)	Wetted Perimeter (m)
3.444	1.45068	3.861

Mean SNR (dB)	Mean depth (m)	Mean velocity (m/s)
44	0.421	0.0915

Mean temp (°C)	Max depth (m)	Max velocity (m/s)
16.409	0.686	0.1389

Discharge Uncertainty		
Category	ISO	IVE
Accuracy	1.0%	1.0%
Depth	0.1%	1.2%
Velocity	0.3%	1.9%
Width	0.1%	0.1%
Method	1.0%	
# Stations	1.9%	
Overall	2.4%	2.5%

Discharge equation	Mid Section
Discharge uncertainty	IVE
Discharge reference	Rated

Data Collection Settings	
Salinity	0.000 PSS-78
Temperature	-
Sound speed	-
Mounting correction	0.000 %

Summary overview

No changes were made to this file
Quality control warnings

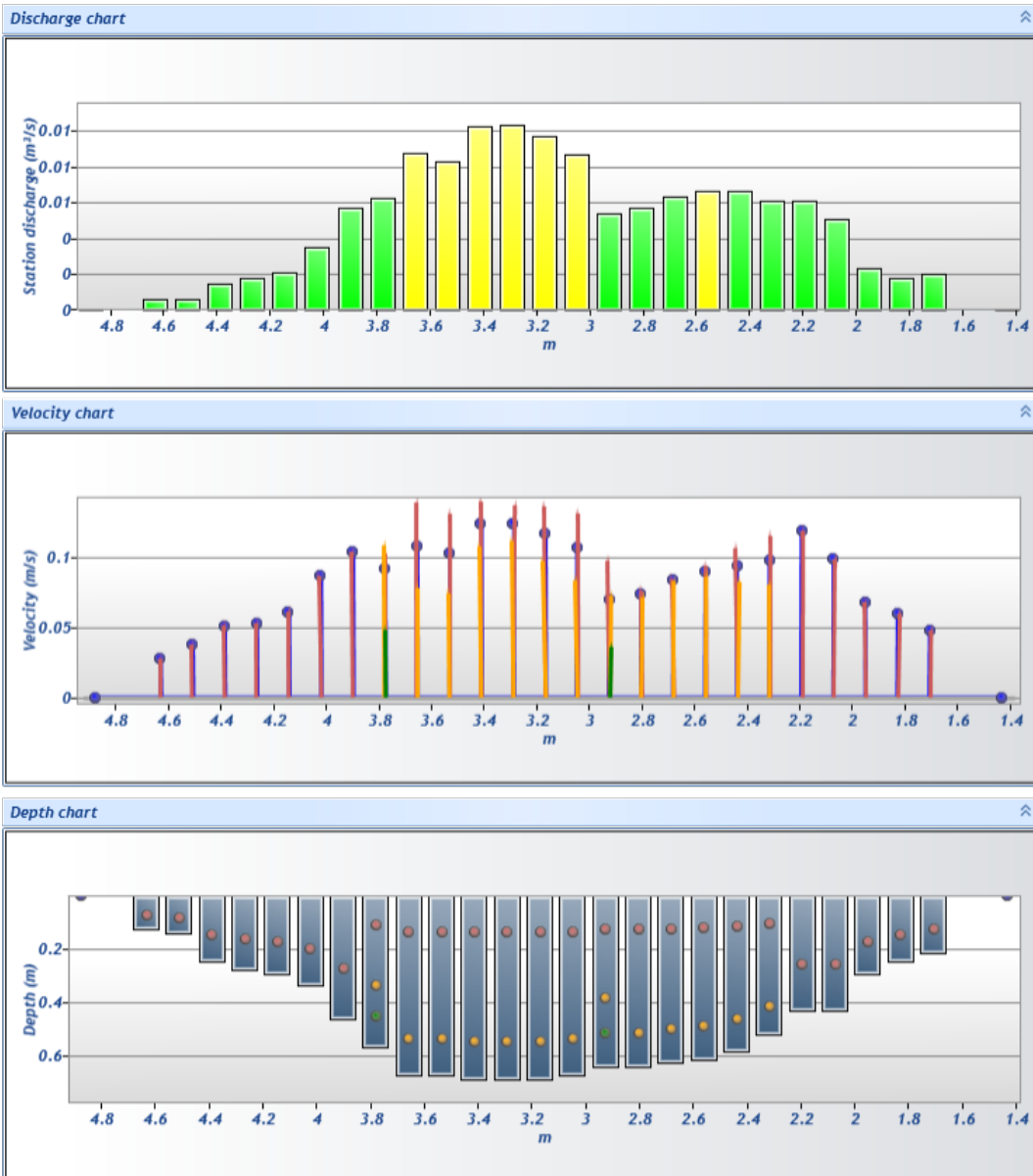


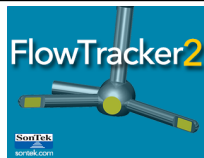
Discharge Measurement Summary

Site name Sodhouse4
Site number 06
Operator(s) RBrannan
File name Sodhouse4_20230615-123937.ft
Comment

Station Warning Settings

Station discharge OK Station discharge < 5.00%
Station discharge caution 5.00% >= Station discharge < 10.00%
Station discharge warning Station discharge >= 10.00%



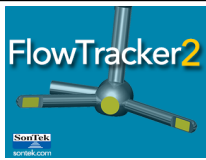


Discharge Measurement Summary

Site name Sodhouse4
Site number 06
Operator(s) RBrannan
File name Sodhouse4_20230615-123937.ft
Comment

Measurement results

St#	Time	Location (m)	Method	Depth (m)	%Depth	Measured Depth (m)	Samples	Velocity (m/s)	Correction	Mean Velocity (m/s)	Area (m ²)	Flow (m ³ /s)	%Q	
0	11:30 AM	1.433	None	0.000	0.0000	0.000	0	0.0000		0.0478	0.00000	0.0000	0.00	✓
1	11:31 AM	1.707	0.6	0.213	0.6000	0.128	80	0.0478	1.0000	0.0478	0.04227	0.0020	1.52	✓
2	11:35 AM	1.829	0.6	0.244	0.6000	0.146	80	0.0596	1.0000	0.0596	0.02973	0.0018	1.33	✓
3	11:37 AM	1.951	0.6	0.290	0.6000	0.174	80	0.0677	1.0000	0.0677	0.03530	0.0024	1.80	✓
4	11:39 AM	2.073	0.6	0.427	0.6000	0.256	80	0.0982	1.0000	0.0982	0.05203	0.0051	3.85	✓
5	11:41 AM	2.195	0.6	0.427	0.6000	0.256	80	0.1181	1.0000	0.1181	0.05203	0.0061	4.63	✓
6	11:42 AM	2.316	0.2/0.8	0.518	0.2000	0.104	80	0.1145	1.0000	0.0973	0.06317	0.0061	4.63	✓
6	11:42 AM	2.316	0.2/0.8	0.518	0.8000	0.415	80	0.0800	1.0000	0.0973	0.06317	0.0061	4.63	✓
7	11:46 AM	2.438	0.2/0.8	0.579	0.2000	0.116	80	0.1059	1.0000	0.0940	0.07061	0.0066	5.00	✓
7	11:46 AM	2.438	0.2/0.8	0.579	0.8000	0.463	80	0.0820	1.0000	0.0940	0.07061	0.0066	5.00	✓
8	11:48 AM	2.560	0.2/0.8	0.610	0.2000	0.122	80	0.0933	1.0000	0.0895	0.07432	0.0067	5.01	✓
8	11:48 AM	2.560	0.2/0.8	0.610	0.8000	0.488	80	0.0857	1.0000	0.0895	0.07432	0.0067	5.01	✓
9	11:51 AM	2.682	0.2/0.8	0.625	0.2000	0.125	80	0.0840	1.0000	0.0833	0.07618	0.0063	4.78	✓
9	11:51 AM	2.682	0.2/0.8	0.625	0.8000	0.500	80	0.0825	1.0000	0.0833	0.07618	0.0063	4.78	✓
10	11:54 AM	2.804	0.2/0.8	0.640	0.2000	0.128	80	0.0758	1.0000	0.0734	0.07804	0.0057	4.32	✓
10	11:54 AM	2.804	0.2/0.8	0.640	0.8000	0.512	80	0.0711	1.0000	0.0734	0.07804	0.0057	4.32	✓
11	11:57 AM	2.926	0.2/0.6/0.8	0.640	0.2000	0.128	80	0.0970	1.0000	0.0693	0.07804	0.0054	4.07	✓
11	11:57 AM	2.926	0.2/0.6/0.8	0.640	0.6000	0.384	80	0.0722	1.0000	0.0693	0.07804	0.0054	4.07	✓
11	11:57 AM	2.926	0.2/0.6/0.8	0.640	0.8000	0.512	80	0.0359	1.0000	0.0693	0.07804	0.0054	4.07	✓
12	12:01 PM	3.048	0.2/0.8	0.671	0.2000	0.134	80	0.1304	1.0000	0.1067	0.08175	0.0087	6.57	✓
12	12:01 PM	3.048	0.2/0.8	0.671	0.8000	0.536	80	0.0830	1.0000	0.1067	0.08175	0.0087	6.57	✓
13	12:04 PM	3.170	0.2/0.8	0.686	0.2000	0.137	80	0.1354	1.0000	0.1160	0.08361	0.0097	7.31	✓
13	12:04 PM	3.170	0.2/0.8	0.686	0.8000	0.549	80	0.0967	1.0000	0.1160	0.08361	0.0097	7.31	✓
14	12:07 PM	3.292	0.2/0.8	0.686	0.2000	0.137	80	0.1362	1.0000	0.1236	0.08361	0.0103	7.78	✓
14	12:07 PM	3.292	0.2/0.8	0.686	0.8000	0.549	80	0.1110	1.0000	0.1236	0.08361	0.0103	7.78	✓
15	12:09 PM	3.414	0.2/0.8	0.686	0.2000	0.137	80	0.1389	1.0000	0.1230	0.08361	0.0103	7.74	✓
15	12:09 PM	3.414	0.2/0.8	0.686	0.8000	0.549	80	0.1070	1.0000	0.1230	0.08361	0.0103	7.74	✓
16	12:12 PM	3.536	0.2/0.8	0.671	0.2000	0.134	80	0.1302	1.0000	0.1020	0.08175	0.0083	6.28	✓
16	12:12 PM	3.536	0.2/0.8	0.671	0.8000	0.536	80	0.0738	1.0000	0.1020	0.08175	0.0083	6.28	✓
17	12:14 PM	3.658	0.2/0.8	0.671	0.2000	0.134	80	0.1381	1.0000	0.1079	0.08175	0.0088	6.64	✓
17	12:14 PM	3.658	0.2/0.8	0.671	0.8000	0.536	80	0.0777	1.0000	0.1079	0.08175	0.0088	6.64	✓
18	12:16 PM	3.780	0.2/0.6/0.8	0.564	0.2000	0.113	80	0.1021	1.0000	0.0914	0.06875	0.0063	4.73	✓
18	12:16 PM	3.780	0.2/0.6/0.8	0.564	0.6000	0.338	80	0.1078	1.0000	0.0914	0.06875	0.0063	4.73	✓
18	12:16 PM	3.780	0.2/0.6/0.8	0.564	0.8000	0.451	80	0.0478	1.0000	0.0914	0.06875	0.0063	4.73	✓
19	12:20 PM	3.901	0.6	0.457	0.6000	0.274	80	0.1034	1.0000	0.1034	0.05574	0.0058	4.34	✓
20	12:23 PM	4.023	0.6	0.335	0.6000	0.201	80	0.0861	1.0000	0.0861	0.04088	0.0035	2.65	✓
21	12:24 PM	4.145	0.6	0.290	0.6000	0.174	80	0.0611	1.0000	0.0611	0.03530	0.0022	1.62	✓
22	12:26 PM	4.267	0.6	0.274	0.6000	0.165	80	0.0528	1.0000	0.0528	0.03345	0.0018	1.33	✓
23	12:27 PM	4.389	0.6	0.244	0.6000	0.146	80	0.0513	1.0000	0.0513	0.02973	0.0015	1.15	✓
24	12:29 PM	4.511	0.6	0.137	0.6000	0.082	80	0.0374	1.0000	0.0374	0.01672	0.0006	0.47	✓
25	12:30 PM	4.633	0.6	0.122	0.6000	0.073	80	0.0275	1.0000	0.0275	0.02230	0.0006	0.46	✓
26	12:32 PM	4.877	None	0.000	0.0000	0.000	0	0.0000		0.0275	0.00000	0.0000	0.00	✓



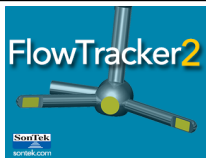
Discharge Measurement Summary

Site name Sodhouse4
Site number 06
Operator(s) RBrannan
File name Sodhouse4_20230615-123937.ft
Comment

Quality Control Settings	
Maximum depth change	50.00%
Maximum spacing change	100.00%
SNR threshold	10 dB
Standard error threshold	0.0100 m/s
Spike threshold	10.00%
Maximum velocity angle	20.0 deg
Maximum tilt angle	5.0 deg

Quality control warnings

St#	Time	Location (m)	Method	Depth (m)	%Depth	Measured Depth (m)	Warnings
3	11:37 AM	1.951	0.6	0.290	0.6000	0.174	Stn Spacing > QC



Discharge Measurement Summary

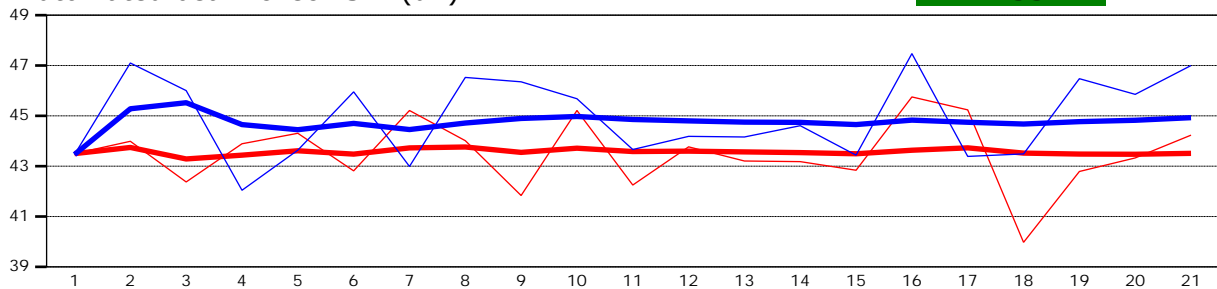
Site name Sodhouse4
Site number 06
Operator(s) RBrannan
File name Sodhouse4_20230615-123937.ft
Comment

Beam 1	
Beam 2	

Automated beam check Start time 6/15/2023 11:30:04 AM

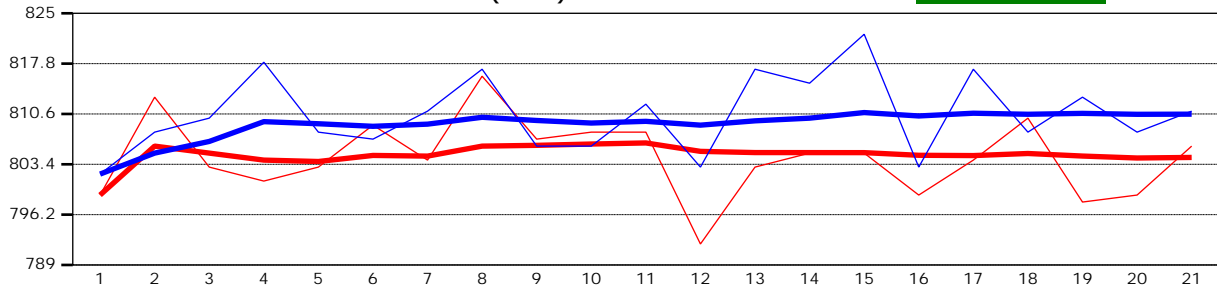
Automated beam check SNR(dB)

PASS



Automated beam check Noise level(cnts)

PASS



Automated beam check Quality control warnings

No quality control warnings



Discharge Measurement Summary

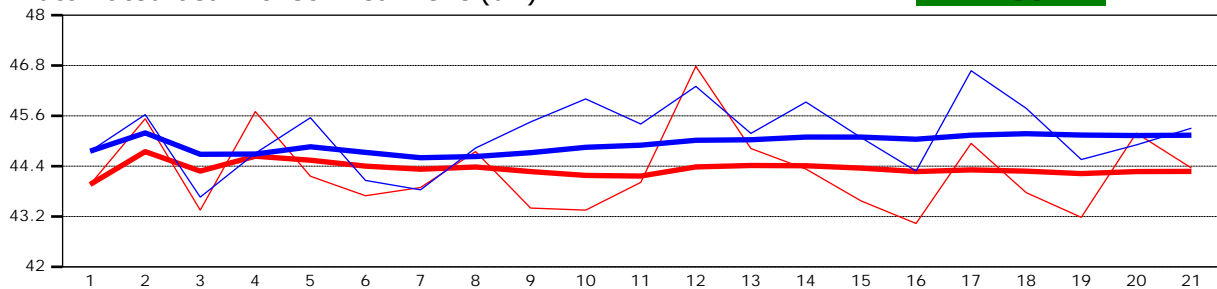
Site name Sodhouse4
Site number 06
Operator(s) RBrannan
File name Sodhouse4_20230615-123937.ft
Comment

Beam 1	
Beam 2	

Automated beam check Start time 6/15/2023 11:30:04 AM

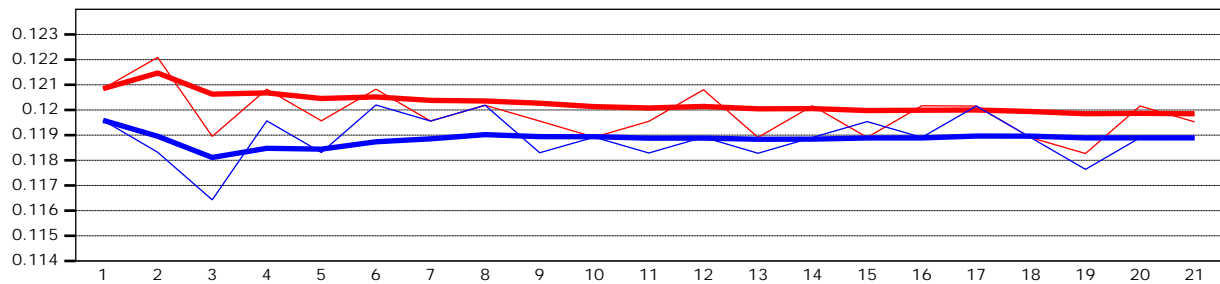
Automated beam check Peak level(dB)

PASS



Automated beam check Peak position(m)

PASS



Automated beam check Quality control warnings

No quality control warnings